

DATA SHEET

Truss-Tower with square 30x30cm section and steel lifting sleeveblock operated by electric chain motor. Cushioned by the vertical tower structure it moves via nylon pulleys.

The 30x30cm structure is 6082-T6 aluminium and is constructed with tubular sections, 50mm external diameter with 3.5mm thickness for the main lifting sections and 26mm exterior diameter with 3.5mm thickness for triangular bars. The fixing between sections is carried out with perforated plaques of the same material and fixed with M-16/8.8 screws.

The Towerlift is set on a solid steel base with twisting wheels for the transport and 4 stabiliser legs adjustable depending on work surface. The lifting is done by means of an aluminum cart that slides vertically through nylon guided pulleys on the corners of the vertical structure. Its Fixed plates with screws do the coupling between the sections of the lift.



TECHNICAL SPECIFICATIONS

MAXIMUM HEIGHT:	12 m
MAXIMUM LOAD:	2000 Kg
ELEVATION:	HOIST
TRUSS SECTION:	30x30cm
ALUMINIUM ALLOY:	6082 T6
MAIN TUBES:	50 x 3,5mm
BRACES:	26 x 3,5mm

COMPONENTS FOR 9 / 12 m

GS-30 /9m	GS-30 /12m
1 x GS-30C	1 x GS-30C
2 x GS30-TR3	3 x GS30-TR3
1 x GS30-TR2B	1 x GS30-TR2B
1 x GS30-TR1B	1 x GS30-TR1B
1 x GS-30B	1 x GS-30B
1 x Sleeveblock	1 x Sleeveblock

You can configure intermediate heights.



GS-30C



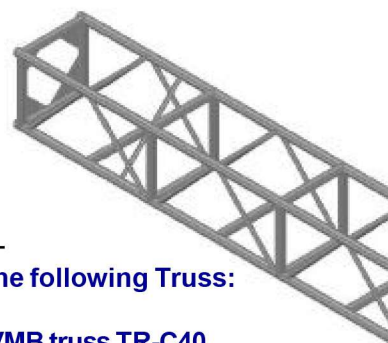
GS30-TR3



SLEEVE BLOCK

GS-30/40E3	3 way block for 40x40cm truss
GS-30/40E4	4 way block for 40x40cm truss
GS-30/52E3	3 way block for 52x52cm truss
GS-30/52E4	4 way block for 52x52cm truss
GS-30/76E3	3 way block for 76x52cm truss
GS-30/76E4	4 way block for 76x52cm truss

HOIST
(optional)



GS-30 can be used with the following Truss:

Square 40x40 cm	VMB truss TR-C40
Square 52x52 cm	VMB truss TR-P52
Rectangular 76x52 cm	VMB truss TR-P76
Folded 76x52 cm	VMB truss TR-P76P

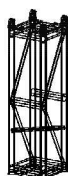
GS30-TR3



GS30-TR2B



GS30-TR1B



GS-30B

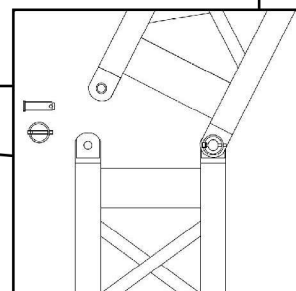


LIST OF COMPONENTS

GS-30C	Top with pulleys
GS30-TR3	Square truss 3 m main tube 3'5 mm
GS30-TR2B	Square truss 2 m main tube 3'5 mm
GS30-TR1B	Square truss 1 m main tube 3'5 mm
GS-30B	Base
GS-30P	Stabiliser leg
GS-30T	Tight piece for leg
GS30-TR2	Square truss 2 m main tube 3'5 mm
GS30-TR1	Square truss 1 m main tube 3'5 mm
GS30-TR08	Sq. truss 0.8 m main tube 3'5 mm
GS30-TR08B	Square truss GS30-TR08 with hinge

Other accessories

SE-GS-12	Ground support assembly helper
SA-G1	Hoist support plaque
1/2C-52M	Hoist bracket
SM-40A	Top support
SM-52A	Top support



Hinge system-easy assembly

GS-30T

GS-30P