

# PIRAM 1T/8

## 8 M MODULAR TRUSS SYSTEM 1000 KG LINE ARRAY SUPPORT



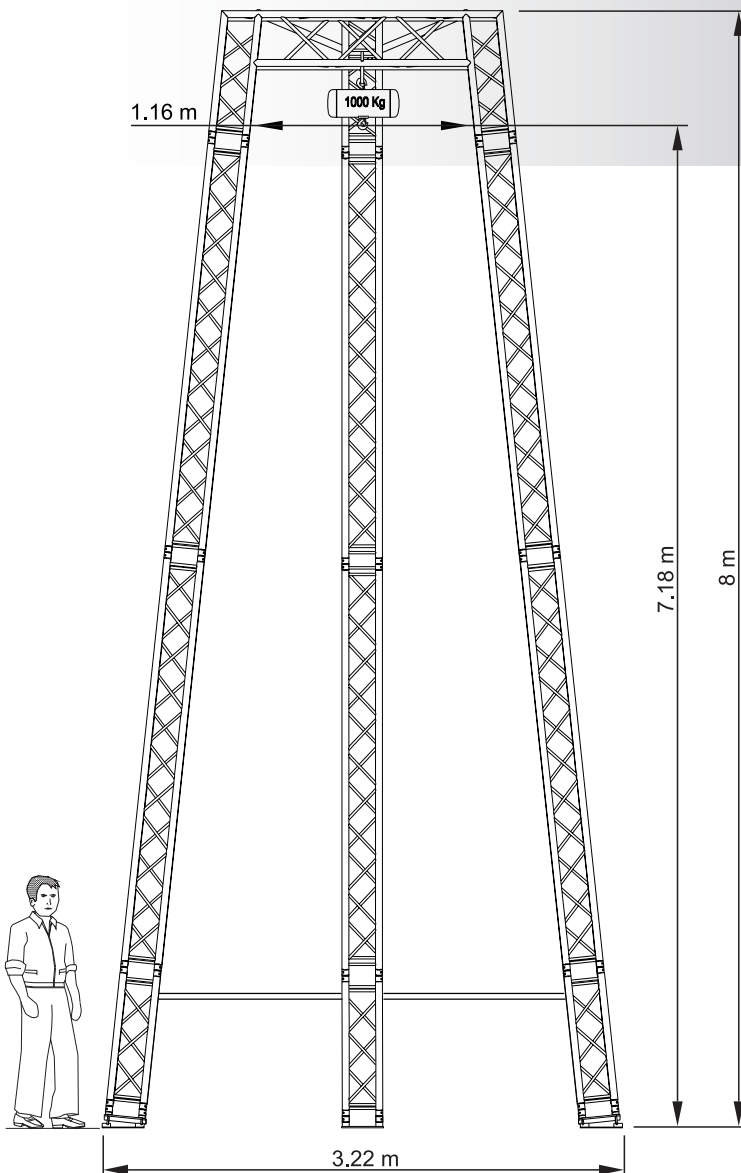
www.vmb.es

info@prolifts.es

- » Perfect solution to fly line array
- » Practical, easy and quick to install
- » Little room for transport
- » Aluminium truss units
- » Articulated ground plates
- » Anchor points to fix the lift supports

### SPECIFICATIONS

Maximum height	8m (26.2')
Maximum load	1000kg (2205 lb)
Work surface	3.22 x 3.22m (10.6 x 10.6')
Structure	Square Truss 29cm
Transport volume	3.25 cbm
Total weight	225kg (496 lb)



### LIST OF COMPONENTS

6 Units	3m square truss 29cm
3 Units	1m square truss 29cm
1 Unit	Top head truss piece
1 Unit	Top head tilt truss piece
2 Units	Articulated ground LEFT base plate
2 Units	Articulated ground RIGHT base plate
1 Unit	Ground base plate
2 Units	Safety bar
4 Units	Double Alicraft



PROLIFTS

PIRAM 1T/8

Pol. Ind. Fuente del Jarro  
C/ Ciudad de Barcelona nº19  
46988 Paterna (Valencia) Spain