

# PIRAM 750/8

**8 M MODULAR TRUSS SYSTEM  
750 KG LINE ARRAY SUPPORT**



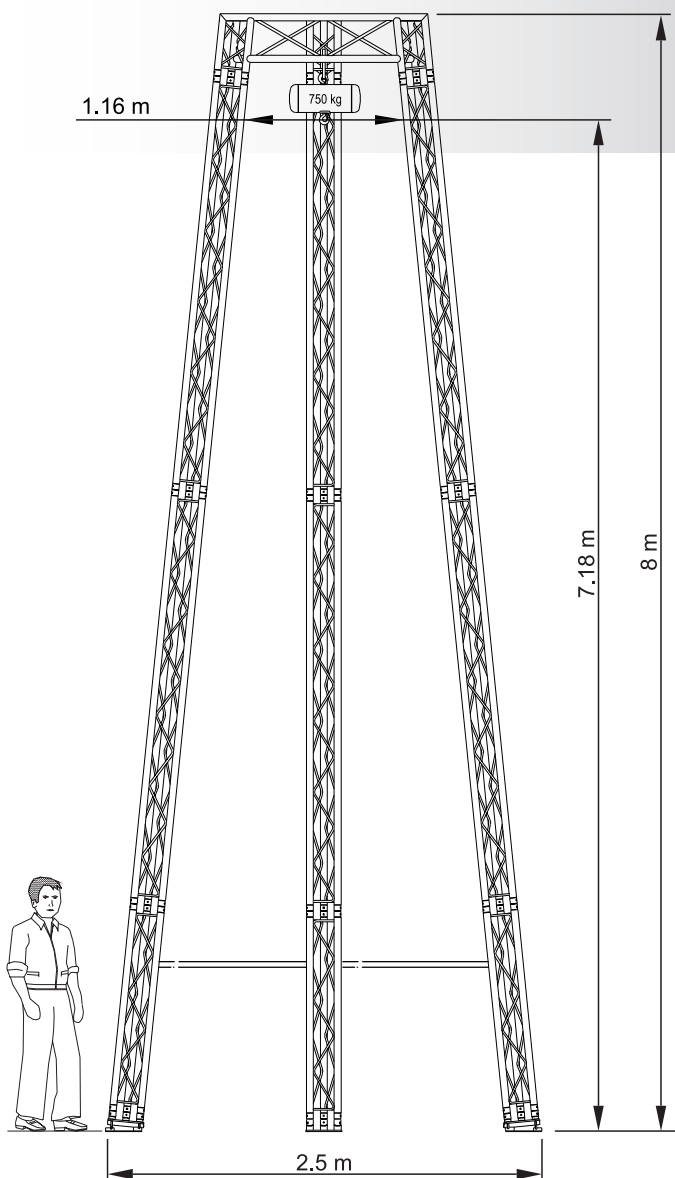
[www.vmb.es](http://www.vmb.es)

[info@prolifts.es](mailto:info@prolifts.es)

- » **Perfect solution to fly line array**
- » **Practical, easy and quick to install**
- » **Little room for transport**
- » **Aluminium truss units**
- » **Articulated ground plates**
- » **Anchor points to fix the lift supports**

## SPECIFICATIONS

Maximum height	<b>8m (26.25')</b>
Maximum load	<b>750kg (1654 lb)</b>
Work surface	<b>3.22 x 3.22m (10.6 x 10.6')</b>
Structure	<b>Triangular Truss 25cm</b>
Transport volume	<b>2.35 cbm</b>
Total weight	<b>175kg (386 lb)</b>



## LIST OF COMPONENTS

6 Units	<b>3m triangular truss 25cm</b>
3 Unit	<b>1.5m triangular truss 25cm</b>
1 Unit	<b>Top head truss piece</b>
1 Unit	<b>Top head tilt truss piece</b>
1 Unit	<b>Articulated ground LEFT base plate</b>
1 Unit	<b>Articulated ground RIGHT base plate</b>
1 Unit	<b>Ground base plate</b>
2 Units	<b>Safety bar</b>
4 Units	<b>Double Alicraft</b>



**PROLIFTS**

**PIRAM 750/8**

Pol. Ind. Fuente del Jarro  
C/ Ciudad de Barcelona nº19  
46988 Paterna (Valencia) Spain